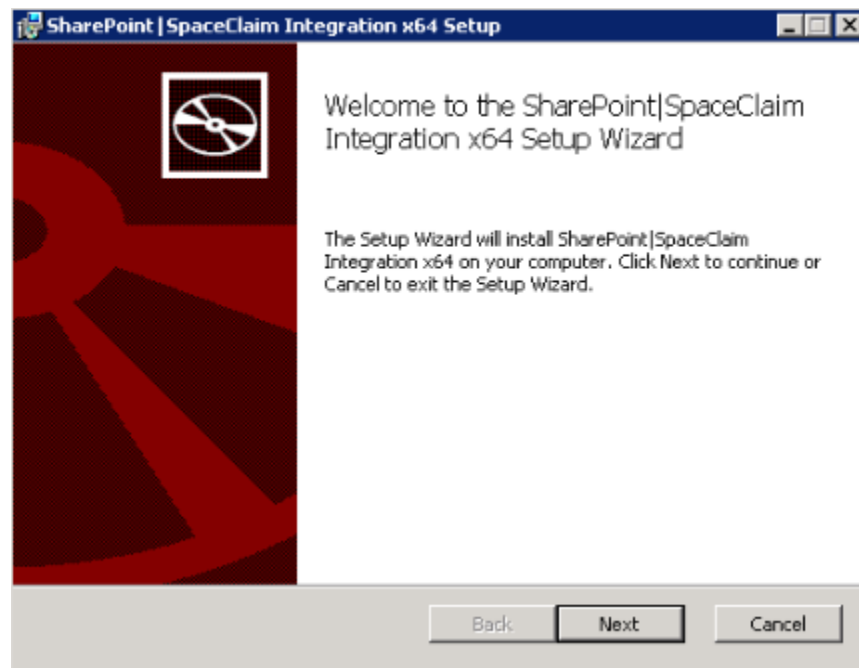


Installation Process: The software installation can be divided into two parts: installation of the server part and the client part.

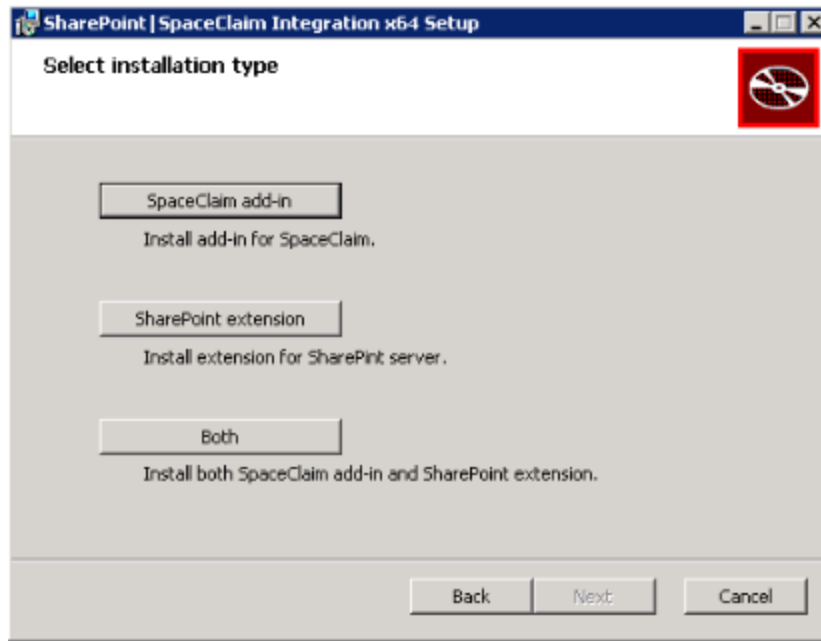
### 1. Server Part Installation:

Run the SpaceClaim Sharepoint installer on the server that contains MS Sharepoint. Sample instructions for installing Sharepoint on a Windows Server machine can be found here <http://technet.microsoft.com/en-us/evalcenter/ee388573.aspx>

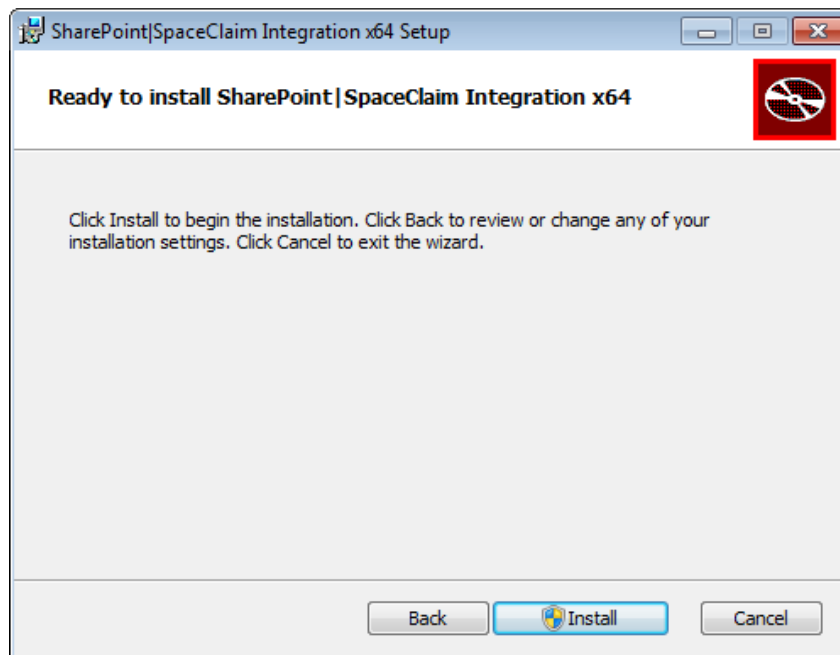
Right click > Install on SC-SP\_Integration\_x64.msi (or) SC-SP\_Integration\_x32.msi depending on the bitwise configuration. This would bring the Installation setup Wizard:



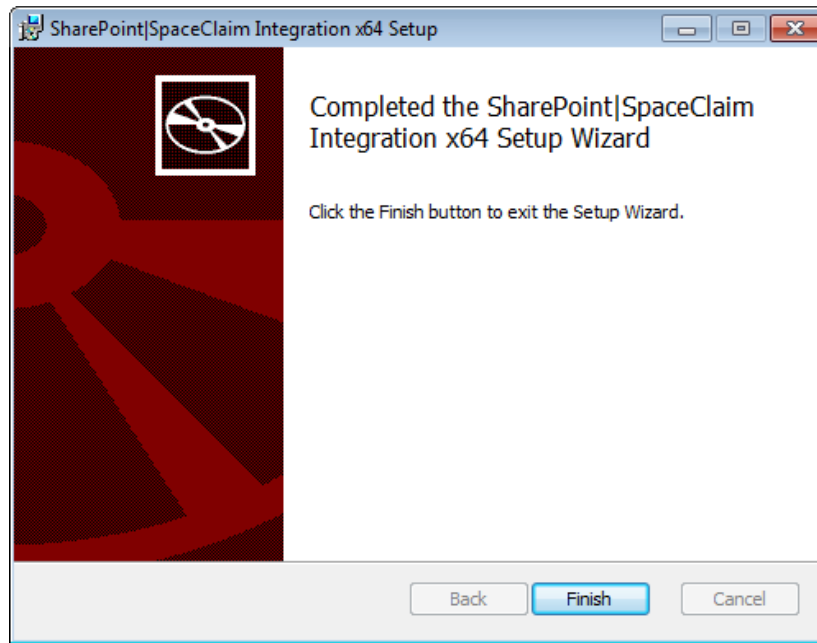
Click Next >



Installing SpaceClaim application on server is not specifically necessary. If SpaceClaim is not installed, click on 'SharePoint extension'. If SpaceClaim is installed you may click on 'Both' if you want to have add-in installed on server otherwise click on 'SharePoint extension'



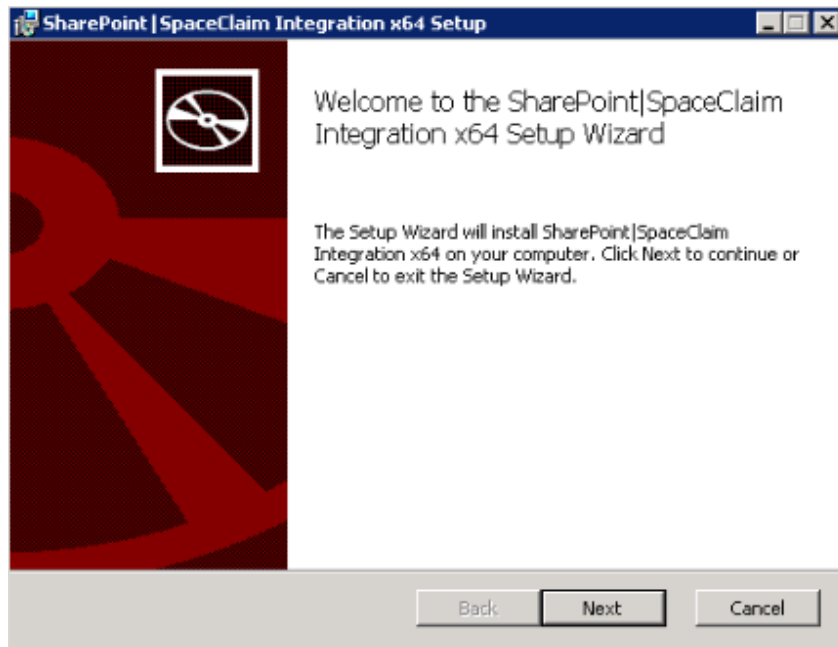
Click Install >



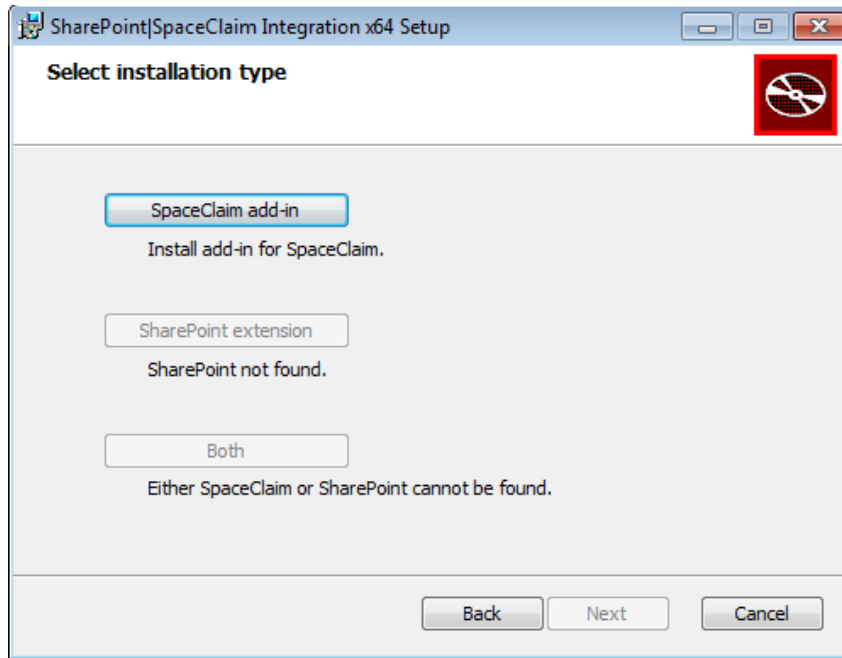
Click Finish >

## 2. Client part Installation:

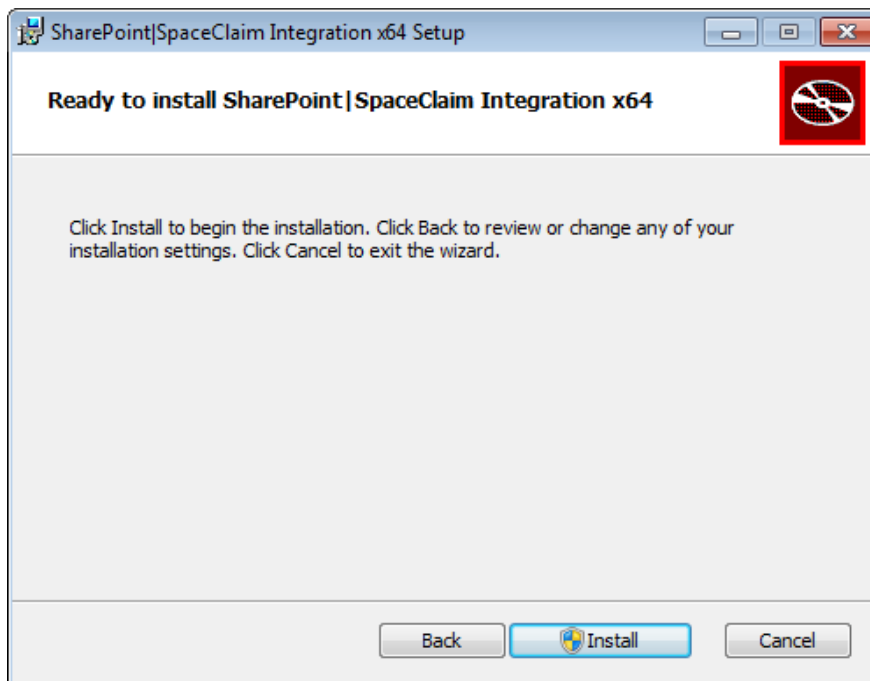
Right click > Install on SC-SP\_Integration\_x64.msi or SC-SP\_Integration\_x32.msi depending on the bitwise configuration. This would bring the Installation setup Wizard:



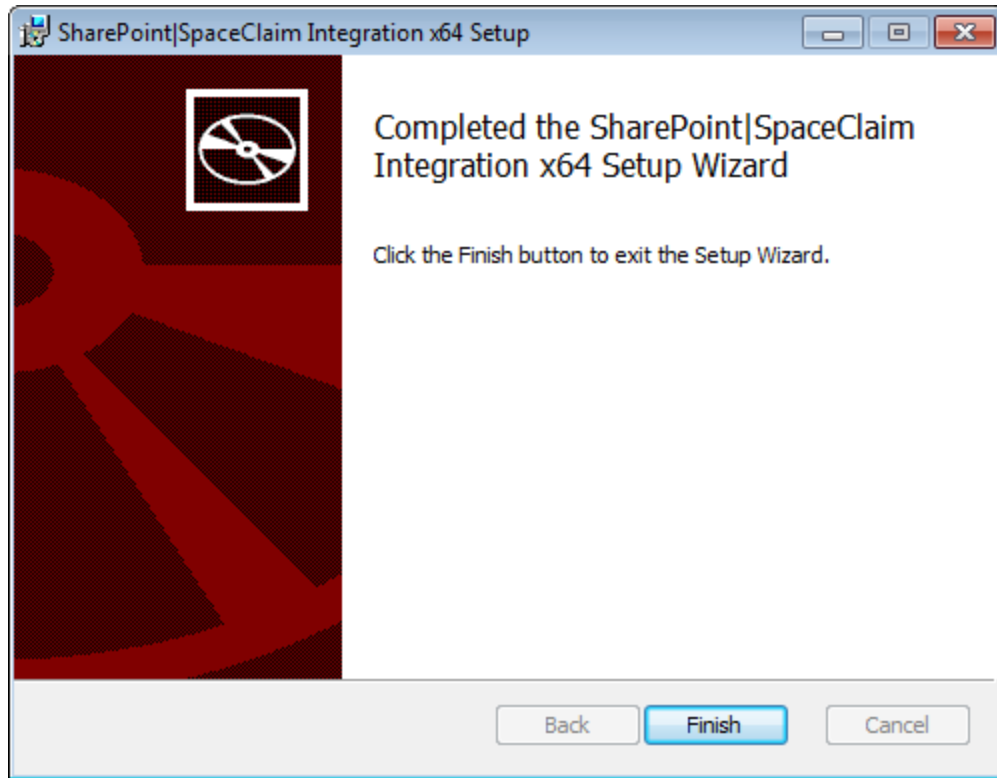
Click Next >



Click on SpaceClaim add-in



Click Install >



Click Finish >